

## THE PORT OF WILMINGTON, DELAWARE WORLD CLASS FINISHED VEHICLE LOGISTICS

### KEY COMPETITIVE ADVANTAGES:

- ◆ Over 35 years of finished vehicle logistics experience
- ◆ Strategically located to serve Northeast & mid-Atlantic markets
- ◆ 115 contiguous acres, 60 – acre surge parcel proximate to the Port, and 65 – acre “build-to-suit” waterfront site available
- ◆ New generation PCTC-capable Auto/RoRo berth on the Delaware River + 7 deep-water berths on the Christina River
- ◆ Private, dedicated access roadway to storage & processing facilities
- ◆ ISO 9001 - certified & highly experienced vehicle processor
- ◆ Most competitive handling costs
- ◆ Certified Foreign Trade Zone (FTZ)

### ENHANCED VELOCITY THRU THE SUPPLY CHAIN:

- ◆ Just minutes from I-95, I-495, I-295 and the New Jersey Turnpike
- ◆ 2 hours from New York and DC
- ◆ On-site rail linking all major consumer markets & OEMs – two Class 1 railroads
- ◆ First full-service seaport on the Delaware River
- ◆ Served by 3 ocean RoRo carriers including 2 US flag



Dedicated PCTC-capable Auto/RoRo berth on the Delaware River provides direct access to vehicle storage areas



4 decades of experience handling commercial, military, fleet, RoRo and high & heavy cargo



ISO 9001 certified vehicle processor



For additional information & rate quotes contact:

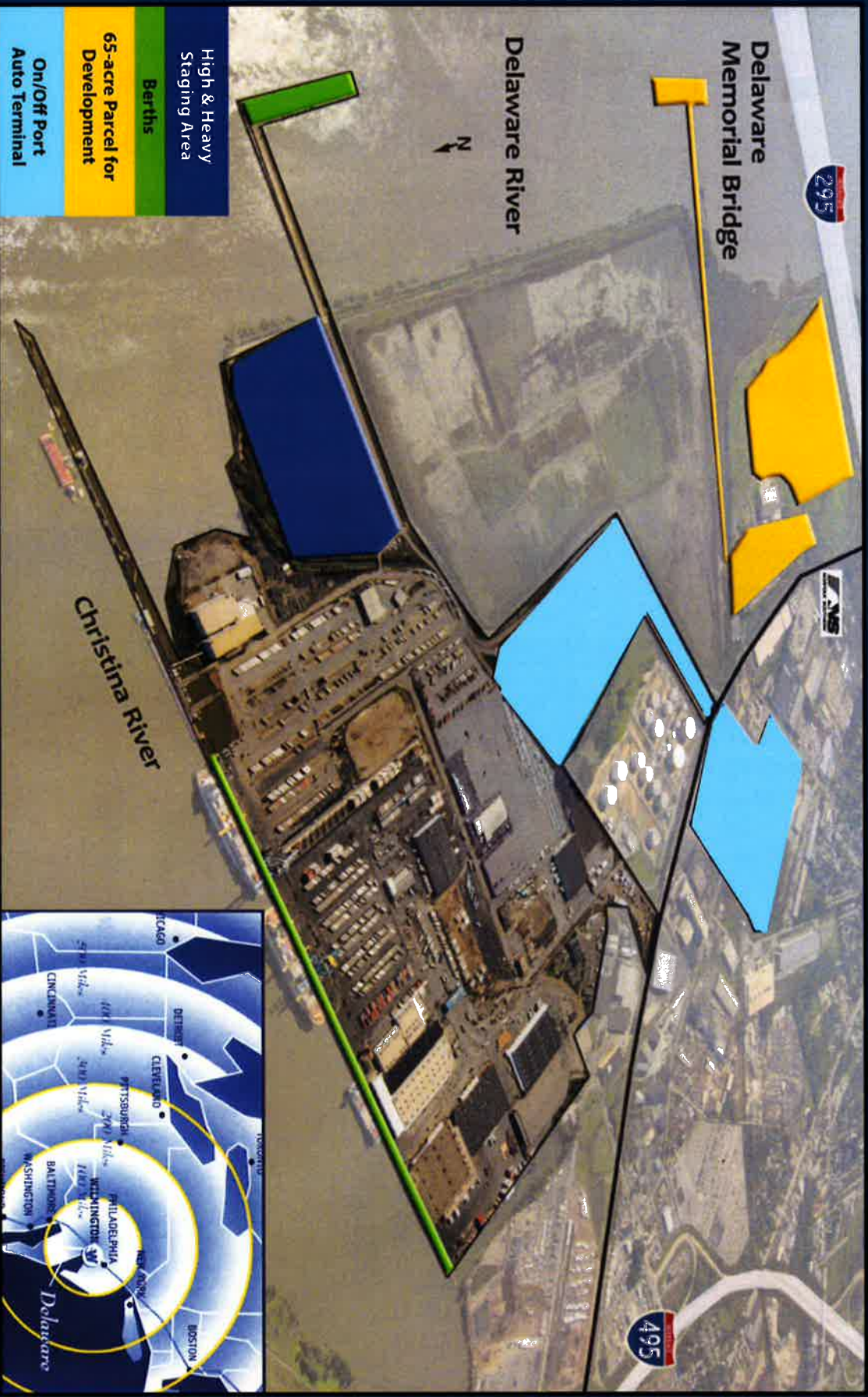
**DIAMOND STATE PORT CORPORATION**

[jharoldson@port.state.de.us](mailto:jharoldson@port.state.de.us) • 302-472-7822

[www.PortofWilmington.com](http://www.PortofWilmington.com)



# Wilmington, DE - The Mid-Atlantic Port of Choice for all Finished Vehicle Logistics Needs



- World class facilities
- State-of-the-art vehicle processing
- Price competitive rates
- Excellent labor-management relations
- Delaware is a business friendly state